

Bharat



Bharat Arize, Ganpati Niwas CHSL, Bangur Nagar,
Link Road, Goregaon West, Mumbai-400104

Call : 9222392221

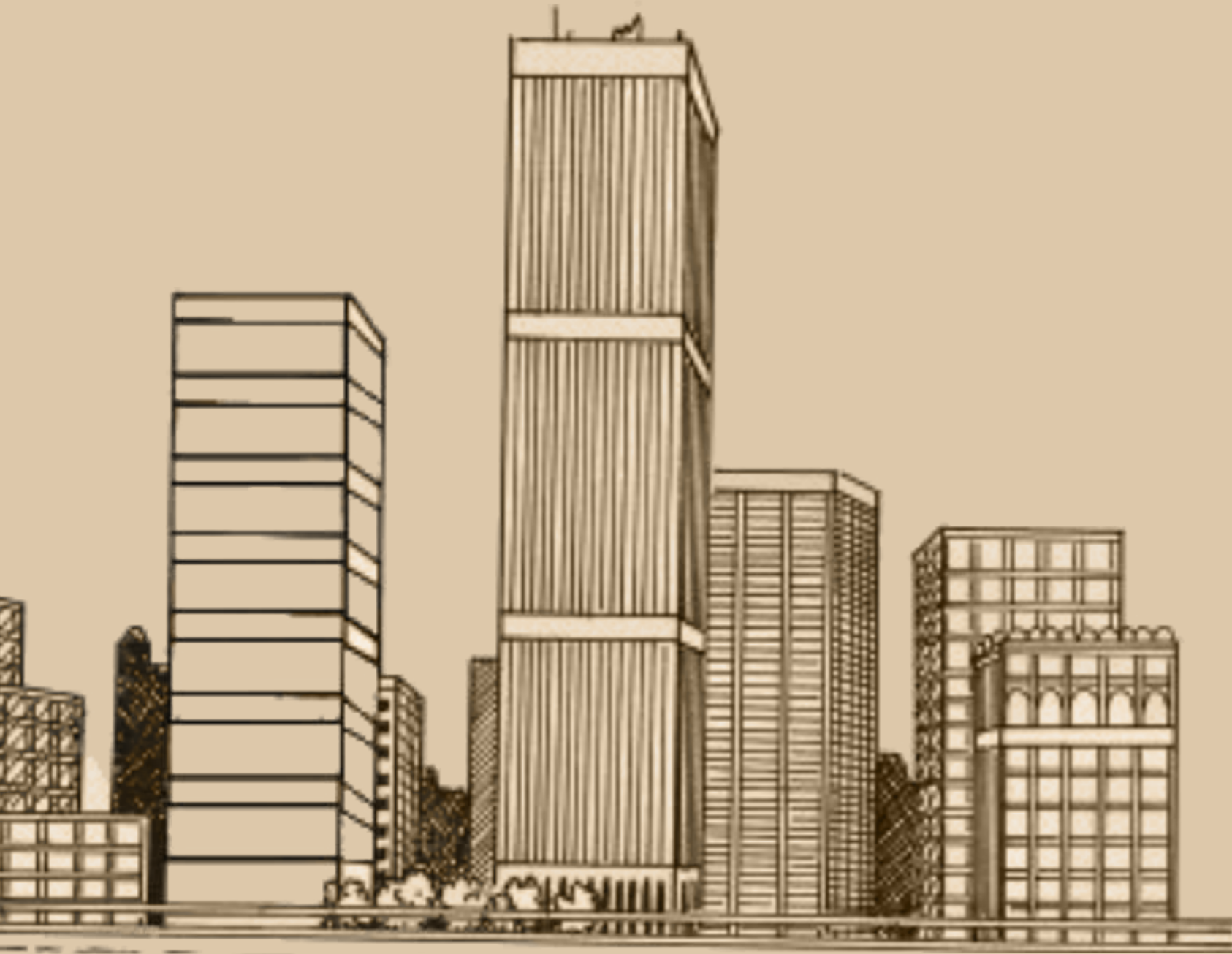
Bharat Realty Venture Private Limited
(Formerly Bharat Infrastructure and Engineering Private Limited.)

Head Office:1, Bharat Corporate Avenue, Near Versova Police Station
D.N Nagar, Andheri West, Mumbai - 400 053.
T: 22 2637 8000 | W: www.bharatrealty.in | E: sales@bharatrealty.in

MahaRera Registration No. P51800000524

Bharat





ABOUT BHARAT

Since decades, we at Bharat Group are committed to craft magical moments for you and your loved ones. Everything we create is born out of innovative ideas, impeccable craftsmanship and bold designs. In the line with expectations of the new-age consumers, our projects offer the finest architecture and best of the amenities. We believe in building communities filled with abundant joy and long-lasting relationships.



ABOUT ARIZE

Bharat Arize is your calling to an opulent lifestyle in the Western Suburbs of Mumbai. Crafted as an embodiment of an ideal life, with Arize, you wake up to a bird's eye view Of the entire cityscape from the expanse of your hand-crafted Smart Residences every day. It boasts 28 floors of sheer opulence and pampering amenities. Arize offers excellent privacy with the luxury of abundant space. With Hi-tech security and world-class amenities, Arize truly redefines smart living.

GRACEFUL RESIDENCES

Arize is a truly one-of-its-kind opportunity for you to reside in an elite home where exclusivity is not a rare phenomenon. Feel truly at home, with homes large, airy and incomparable. Studded with everything that spells class, comfort and convenience coupled with smart living, you will find right here. Arize is a space that fills the fine lines of your dream with a home that embodies your ideal lifestyle.





Luxury In Every Single Detail



Commercial Parking &
Residential Parking



Security System



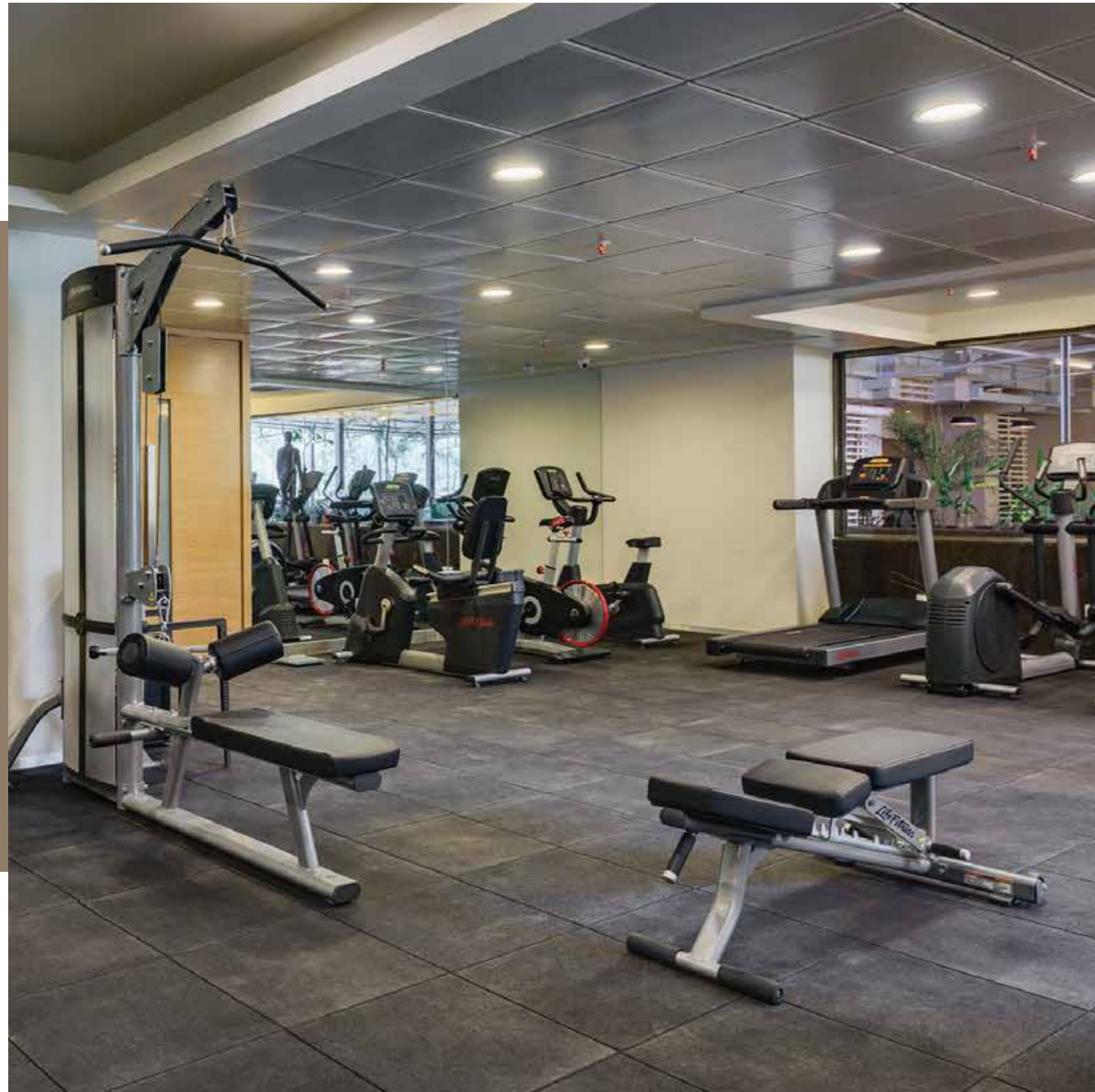
Designer Bathrooms



Well Designed Spaces



Grand Entrance Lobby



The Beauty Of Arize Life



Club House



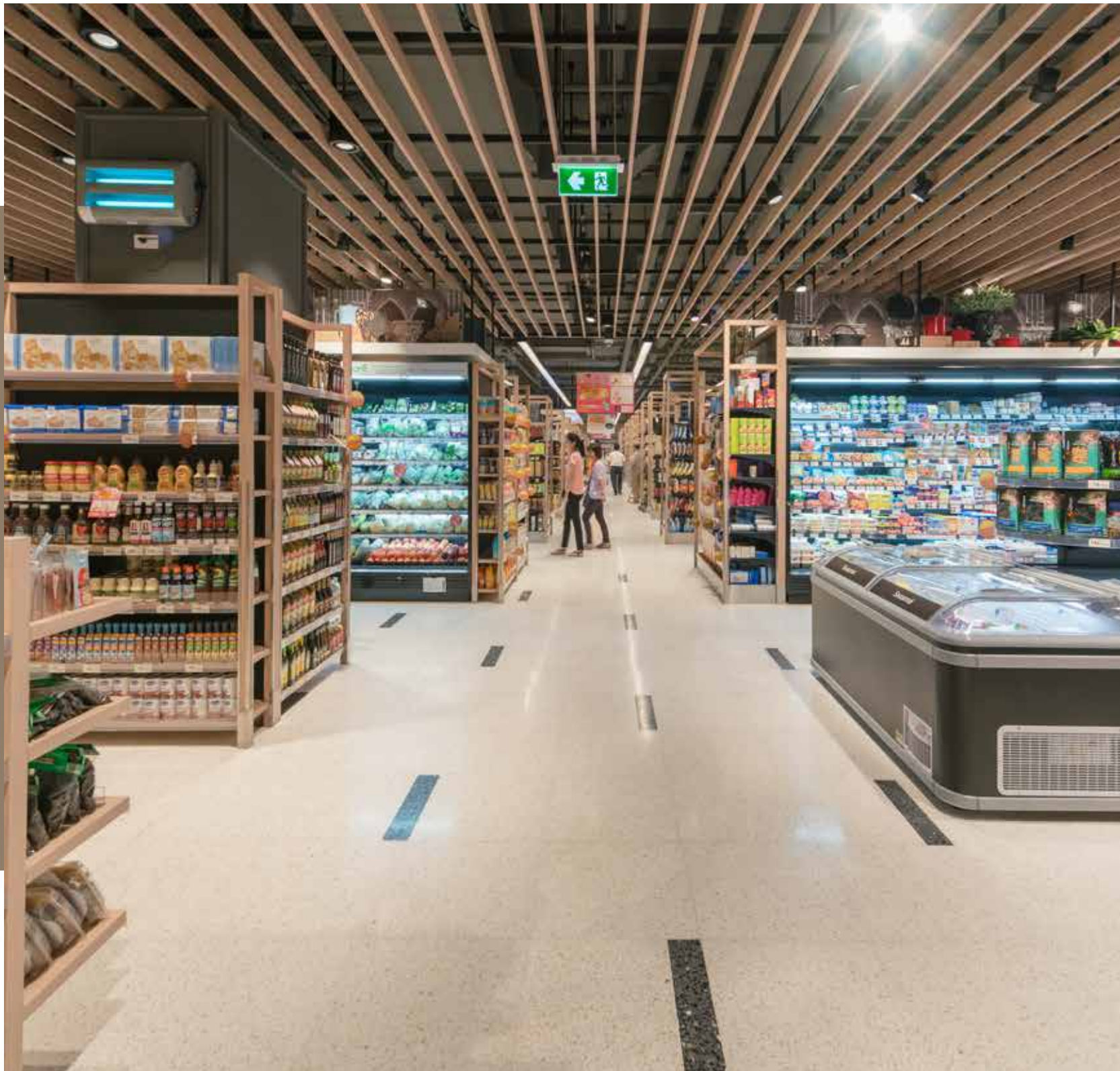
Gymnasium



Kids Play Zone



Indoor Game Zone



HYPER MARKET AT YOUR FEET

Enjoy the supremacy of maximum availability with a supermarket right at your feet.



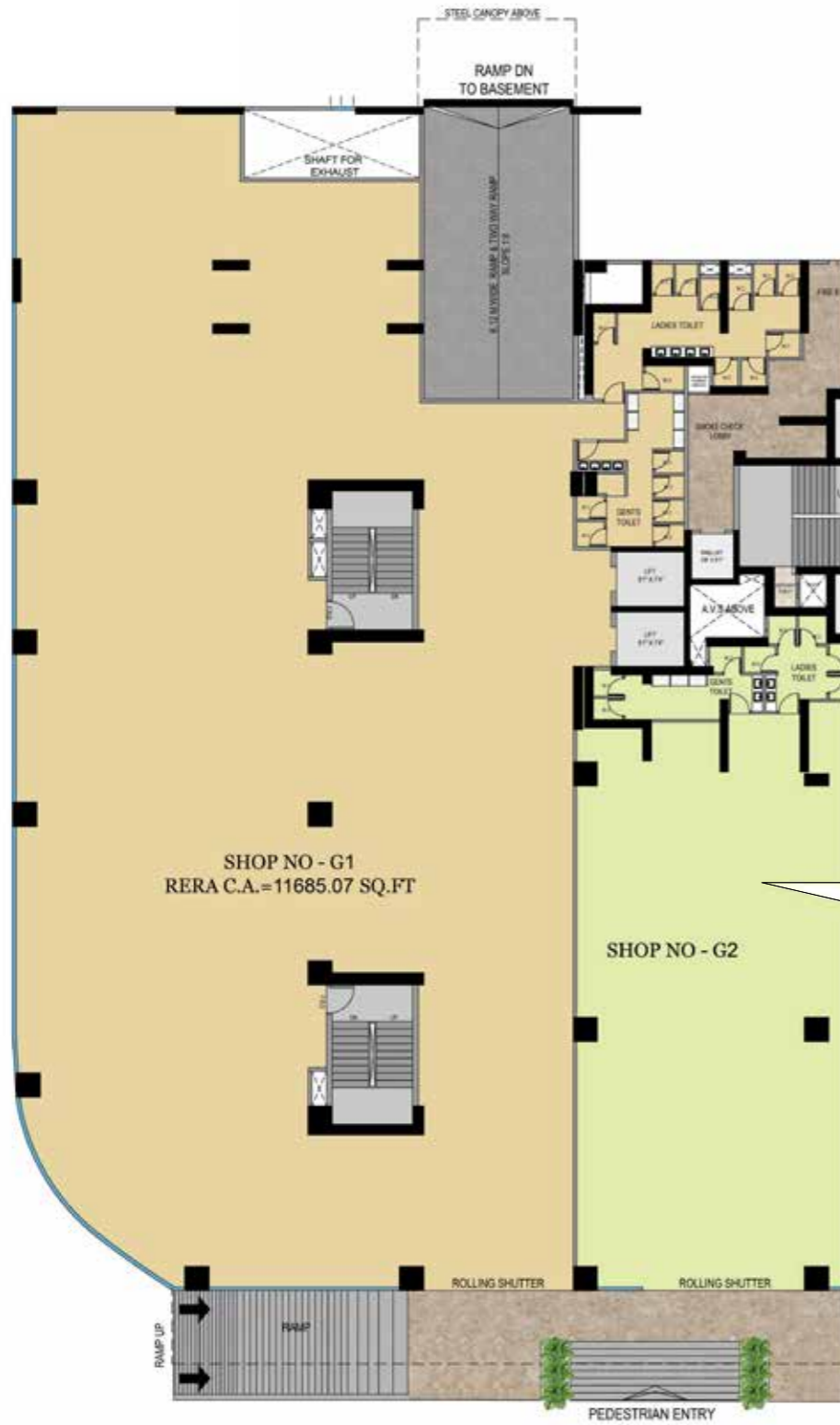
THE WORLD IS AROUND YOU

With Arize, you're in the middle of everything. With excellent connectivity and hot-spots of the city just walking distance away, the world surrounds you.



SMART SOLUTIONS

Arize offers smart solutions for every peculiar detail. It enables you to live a concern-free life, exactly the way you want.

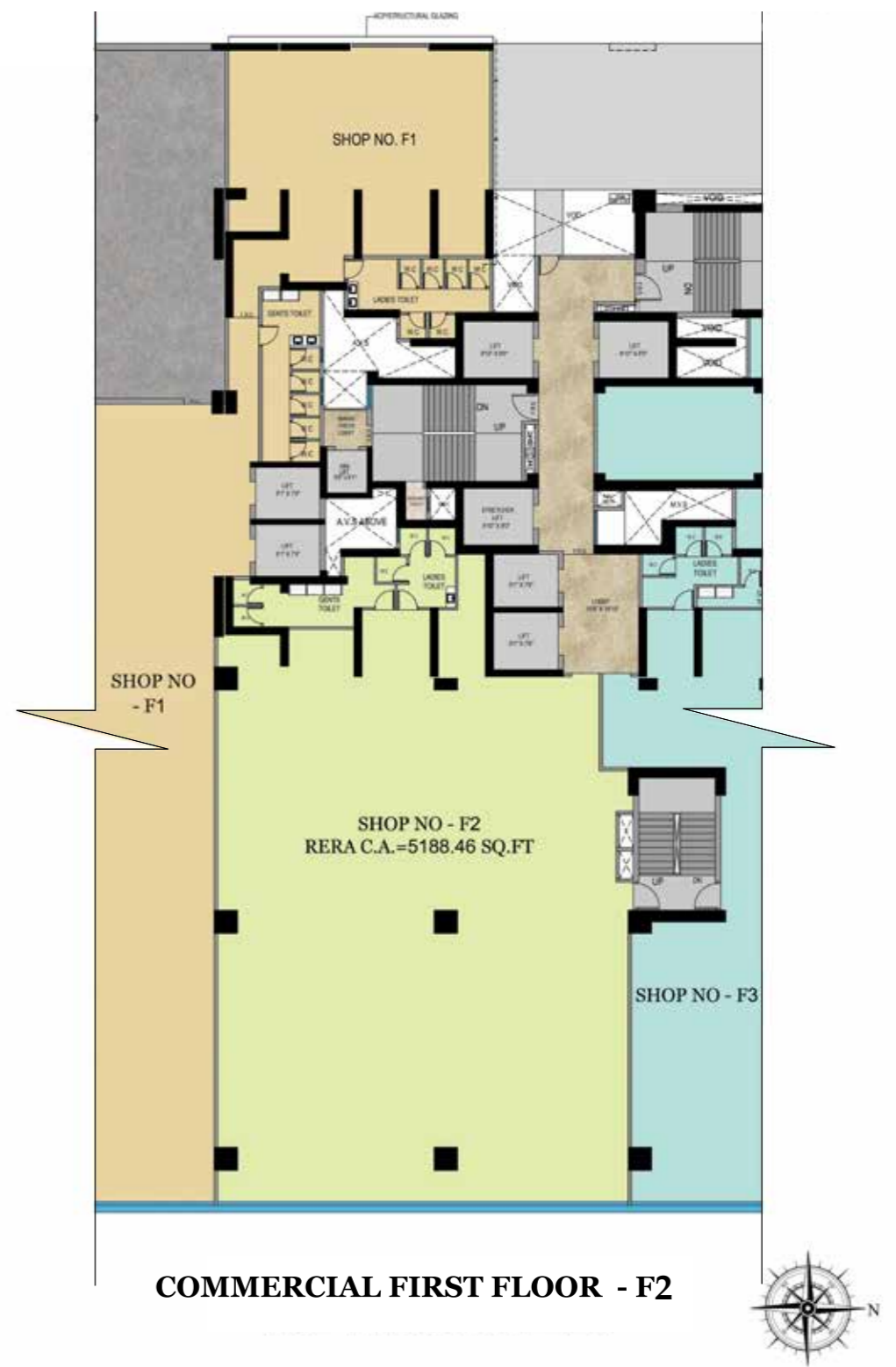
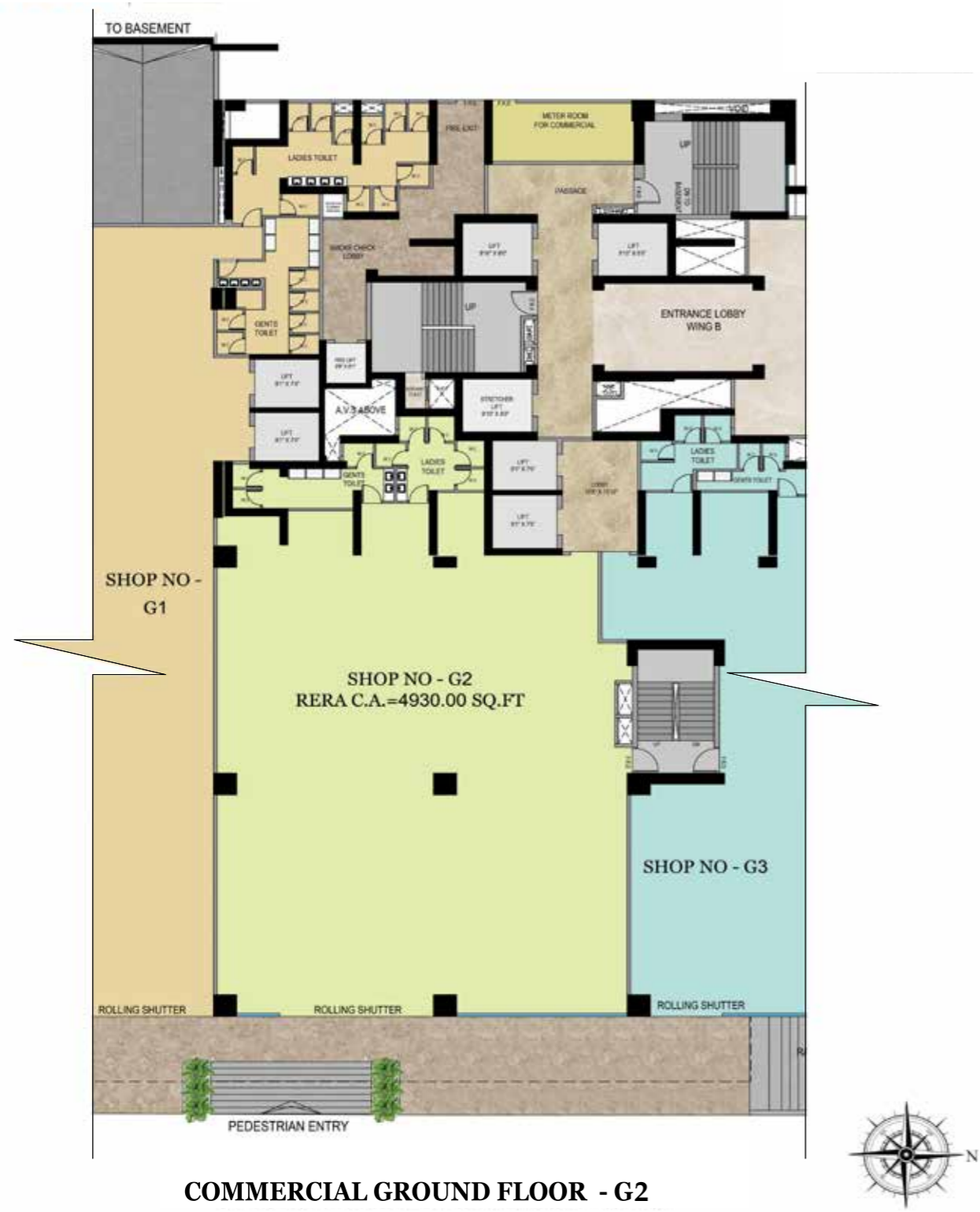


GROUND FLOOR PLAN



COMMERCIAL FIRST FLOOR - F1





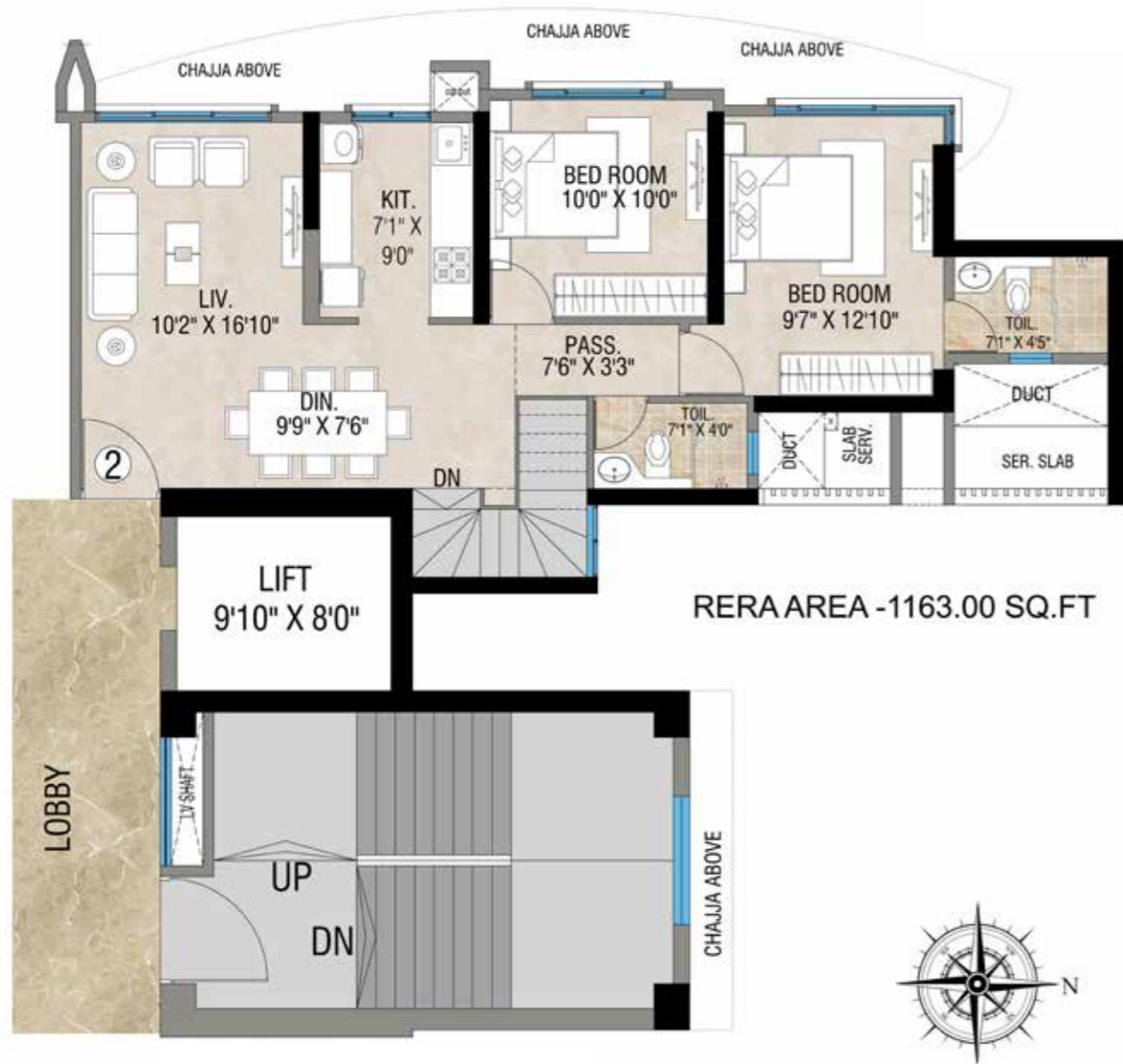


COMMERCIAL GROUND FLOOR - G3



COMMERCIAL FIRST FLOOR - F3





27TH FLOOR PLAN



26TH FLOOR PLAN (REFUGE)



FLR	SR. NO	TYPE	FLAT NO	RERA CARPET AREA (SQ.FT)
28	1	3BHK	2801	710
	2	3BHK	2802	710
	3	3BHK	2803	710
	4	3BHK	2804	710

28TH FLOOR PLAN





PREMIUM LOCATION

Strategically placed in a premium location, Arize offers excellent connectivity and accessibility to some of the most desired hot spots of the city. There is much more to Arize than just convenience, with commercial developments underway, the location offers an excellent opportunity of exponential growth.

- 6 Mins Walk To Oshiwara Station
- 15 Mins Drive To East-West Hub Mall Flyover
- 2 Mins Drive To Inorbit Mall
- A Minute Away From Hypercity
- 14 Mins To Andheri Lokhandwala
- 15 Mins Drive To JVLR East-West Flyover Connecting S.V Road To Western Express Highway
- 30 Mins Drive To Marve Beach
- Closely Connected To Upcoming Metros Near Inorbit Mall